

SPECIFICATION SHEET

TYPE:	PROJECT:	QTY:



Linea SDN

Deep single narrow LED strip surface mount aluminum track

ALUMINUM PROFILE:

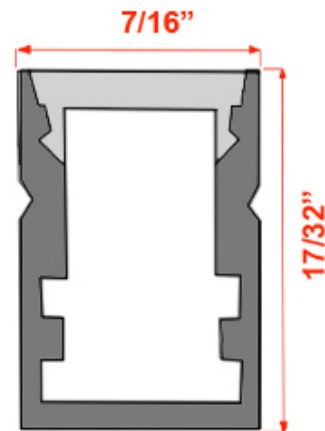
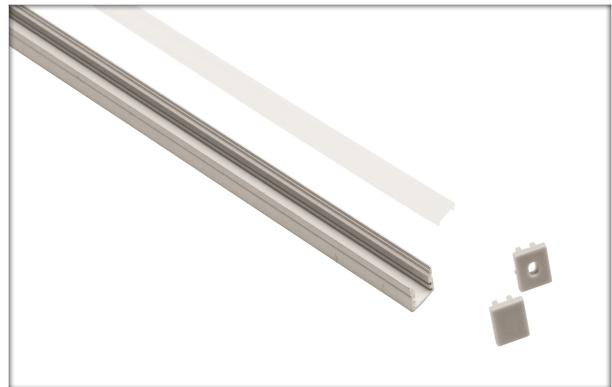
- Custom cut to any length
- Simple application with tape adhesive
- Surface mount design (but can be recessed)
- Dots of light invisible
- Comes with standard wire tail of 3" with connector on 1 end only (extension leads sold separately and daisy chaining in-out wires available upon request)

LENSES AVAILABLE:

- Milky

COMPATIBLE LED STRIPS:

- Only 3528/120



*+1/16" (1mm)
for adhesive